

CRYOGENICS



KRIOGENIKA

KRIOGENIKA

The newest developments in systemic cryotherapy

CRYOSAUNA

CRYOCHAMBER

Temperatures up to -160°C





The JUKA logo is mounted on the roof of a modern building. It features a stylized snowflake icon to the left of the word "JUKA" in a bold, orange, sans-serif font. The building's facade is made of large glass panels reflecting the sky and surrounding trees.

CRYO SAUNA

CRYOCHAMBER



KRIOSAUNA • KRIOKOMORA

Extremely Low Temperatures



Cryotherapy is the key to our beauty!

Beauty, health and youth may be preserved
by extremely low temperatures!

Instead of spending your whole days in beauty parlors,
it is enough to use the cryochamber or the cryosauna
for 2 to 3 minutes.

Keep your body in shape for years!

JUKA CRYOTHERAPY

Cryotherapy (Greek "cryo" – cold, "therapeia" – cure) is a term used for treatment based on using extremely low-level temperatures (much below -100°C) directly on the body surface within the time frame of 2 to 3 minutes.

Cold-treatment was known already back in ancient Egypt (ca. 2000 years B.C.). In the 5th c. B.C. Hippocrates has used cold to reduce pain and swellings. Cold toughens up our organisms, increases immunity, speeds up metabolism, improves blood circulation, grants us health and energy. Women since the dawn of time have used cold baths out of concern for their beauty and have looked sensational without using modern cosmetics or numerous beautifying treatments. Short-term exposure to cold is positive for skin and reduces cellulite.

Cryotherapy is also used in rheumatology, orthopaedics, neurology, burn treatment, as well as pain alleviating, lowering muscle tension, swellings reduction and shortening injury recovery time. It is recommended for people suffering from various infections or having weight disfunctions, athletes. Cryo-

therapy improves well-being, relaxes, energizes and increases vitality – your mood is better, you no longer feel depressed, fatigued or tired, on the contrary, you are overwhelmed by a feeling of relaxation, liveliness and wellness. *Cryotherapy is the new biological regeneration.*



After leaving the cryochamber, it is advisable to go to the gym and work out a little

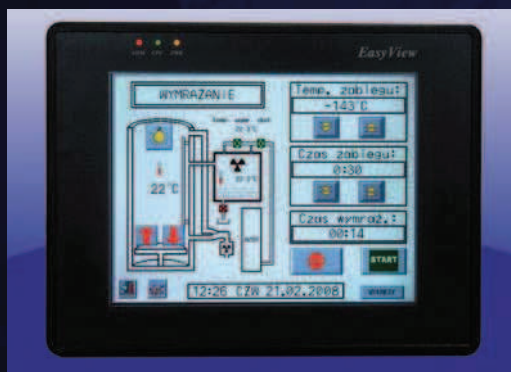
CRYOSAUNA – maximum safety



"CryoSauna" is a single-person cryogenic chamber used for individual treatments of systemic cryotherapy.

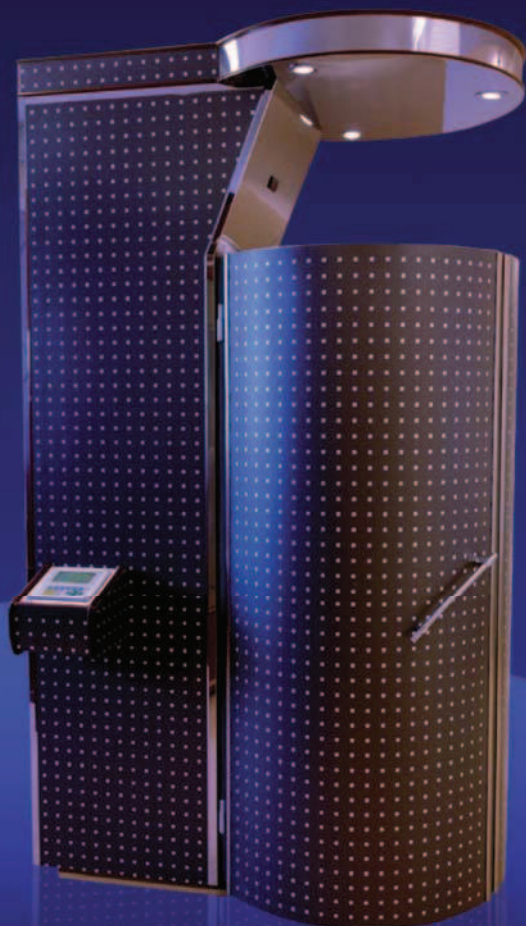
During the treatment the temperature is regulated individually by the staff within the range from -140°C to -160°C . The time may also be changed from 30 seconds to 3 minutes.

The cryosauna is equipped with an elevated floor, so the person inside is submerged in the "cryobath" up to his/her shoulders – the head is held outside of the effect area of low temperature, thus the user breathes the air from the main room. Such a solution helps also people suffering from claustrofobia. It also provides a direct contact with the patients throughout the treatment, which improves their sense of safety. The cabin of the cryosauna is fit out with pivoting door, which can be opened at all times using minimal strength again reassuring patients of their absolute safety. The cryosauna has an airing system which expels the gas used in the cabin-cooling process simultaneously ventilating the main room. The interior of the cabin is oval and heterogenous making the temperature inside to be spread out evenly.



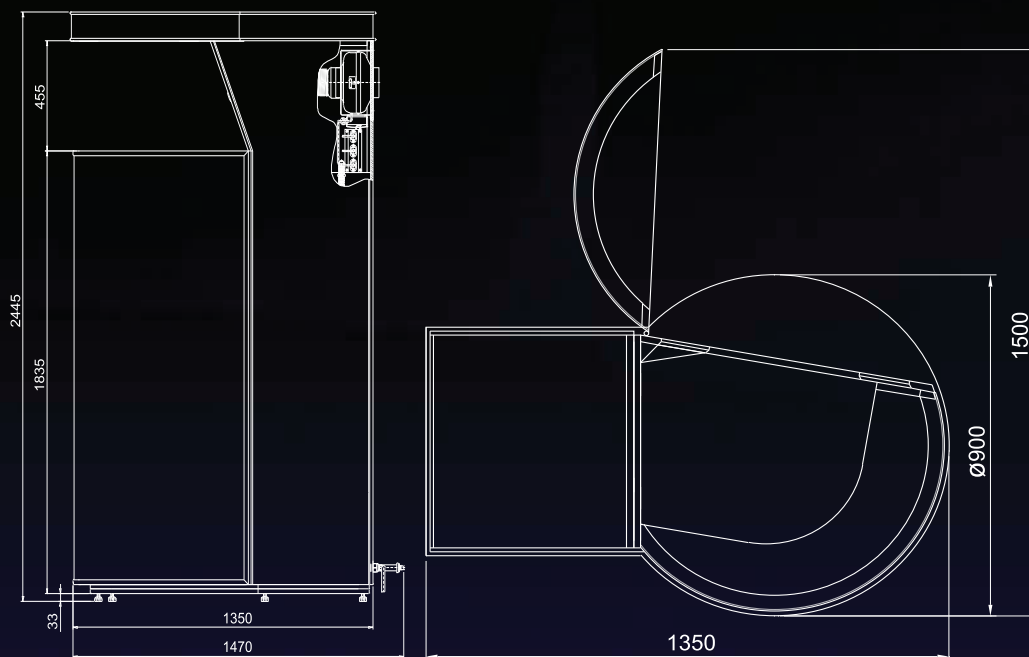
The cryosauna has the Certificate of Medicine and has been entered to the Medical Products Register.

Liquid nitrogen or liquid air may be the source of cold. The substances are stored and delivered from a cryogenic tank.





CRYOSAUNA – technical data



Dimensions of the CRYOSAUNA

1	Overall dimensions of the cryosauna <ul style="list-style-type: none">– Width (when the door of the cabin is closed)– Width (when the door of the cabin is opened)– Total length– Total height	900 1500 1470 2445	mm mm mm mm
2	Weight of the chamber (the cabin with a person inside)	250 – 300	kg
3	Height of the patient	150 – 200	cm

Electrical parameters of the CRYOSAUNA

1	Nominal power input	1.5	kW
2	Power supply	400/3~/50	V/Hz

Technical parameters of the CRYOSAUNA

1	Temperature range of the cryosauna	-140 – -160	°C
2	Freezing out of the cryosauna (cabin startup sequence)	4 – 8	min
3	Time range of a single treatment	1 – 3	min
4	Recommended time of a single treatment	1.5	min
5	Maximum time of a single treatment	3	min

Standard consumption of the cryogenic gas

1	Freezing out of the cryosauna	~ 8 – ~ 10	kg
2	During the treatment	~ 1 – ~ 1.5	kg/min

CRYOCHAMBER



Cryogenic chamber (cryochamber) is suited for group systemic cryogenic therapy. Cryochamber is a unit composed of two separate rooms – the preliminary chamber and the main chamber. The temperature may be set ranging from -40°C to -60°C in the preliminary chamber and from -100°C to -160°C in the main chamber. The time of the procedure is set and controlled by the personnel and equals 3 minutes for each chamber. Both treatment temperature and time may be selected and planned individually for each and every therapy.

Years of experience in construction combined with highly specialized technology enabled using state of the art solutions in creating cryogenic chambers which focus on increasing the comfort as well as the safety of patients undergoing systemic cryogenic treatment.

The systemic cryotherapy in our "open" cryochamber is also suitable for patients suffering from claustrofobia and the treatment itself is much more comfortable.

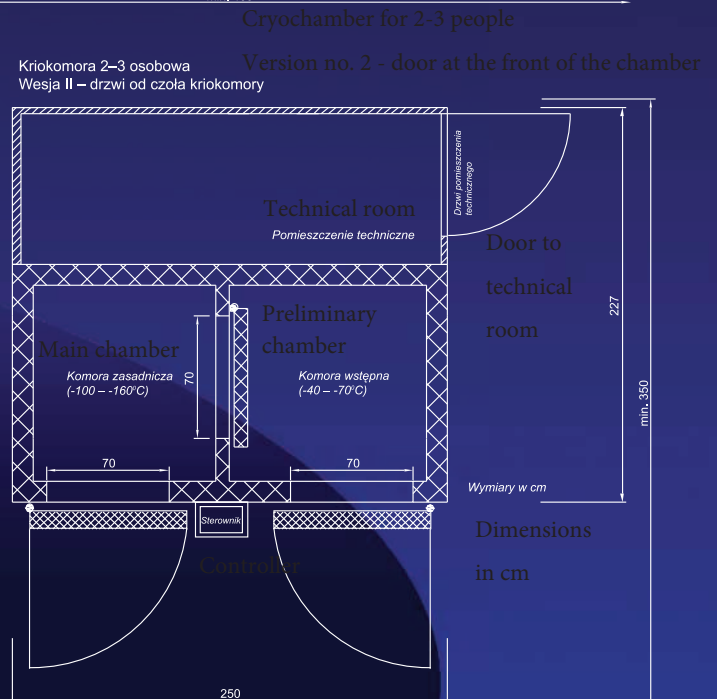
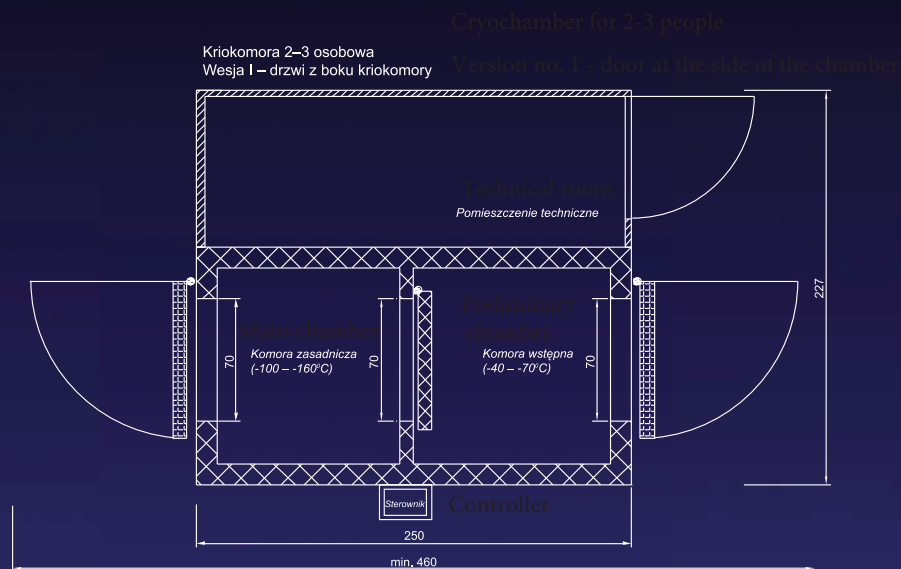
The cryochamber has the Certificate of Medicine has been entered to the Medical Products Register.



Induced circulation of "cold" enables an even spread of temperature throughout the rooms. Furthermore the lack of roof eliminates the problem of heat produced by patients accumulating under the ceiling. In chambers equipped with roofs the accumulated heat has a negative effect on the distribution of temperature within the area of both chambers.

The advantages of our cryochamber:

- relatively low investment costs,
- low operation costs,
- low usage of the cryogenic gas,
- very short freezing out time,
- fast investment reimbursement,
- low space requirements,
- easy service,
- direct contact with patients,
- treatment temperature and time regulation,
- cryotherapy now available for people with claustrofobia,
- great patient safety,
- compatible with directives of National Health Fund (NFZ) on refunds



CRYOCHAMBER

Dimensions of the CRYOCHAMBER

CryoChamber		for 2–3 people	for 4–5 people	
1	- Width L	2500	3300	mm
	- Depth B	2300	2800	mm
	- Height H	2500	2500	mm
2	Weight	~ 1500	~ 2000	kg

Electrical parameters

Cryochamber		for 2–3 people	for 4–5 people	
1	Nominal power input	16	16	A
2	Power supply	230~/1/50	230~/1/50	V/Hz

Parametry techniczne

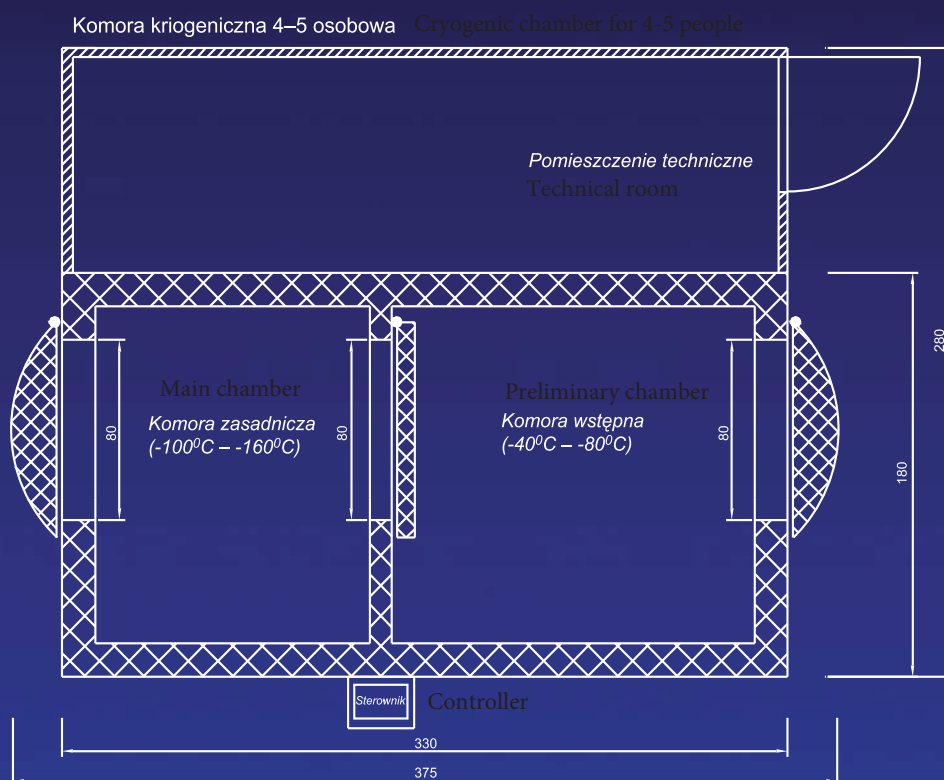
Cryochamber		for 2–3 people	for 4–5 people	
1	Temperature range in the main chamber	-140 – -160	-140 – -160	°C
2	Temperature range in the preliminary chamber	-40 – -80	-40 – -80	°C
3	Time range in the main chamber	1–3	1–3	min
4	Time range in the preliminary chamber	1–3	1–3	min
5	Freezing out time (cryochamber startup)	5–10	5–10	min

Nominal consumption of the cryogenic gas for a chamber supplied with liquid air

Cryo-chamber		for 2–3 people	for 4–5 people	
1	Freezing out of the cryogenic chamber	~25	~45	kg
2	During the treatment	~2	~4	kg/min

Nominal consumption of the cryogenic gas for a chamber supplied with liquid nitrogen

Cryo-chamber		for 2–3 people	for 4–5 people	
1	Freezing out of the cryogenic chamber	~ 50	~ 70	kg
2	During the treatment	~ 2.5	~ 4–5	kg/min



JUKA CRYOCHAMBER

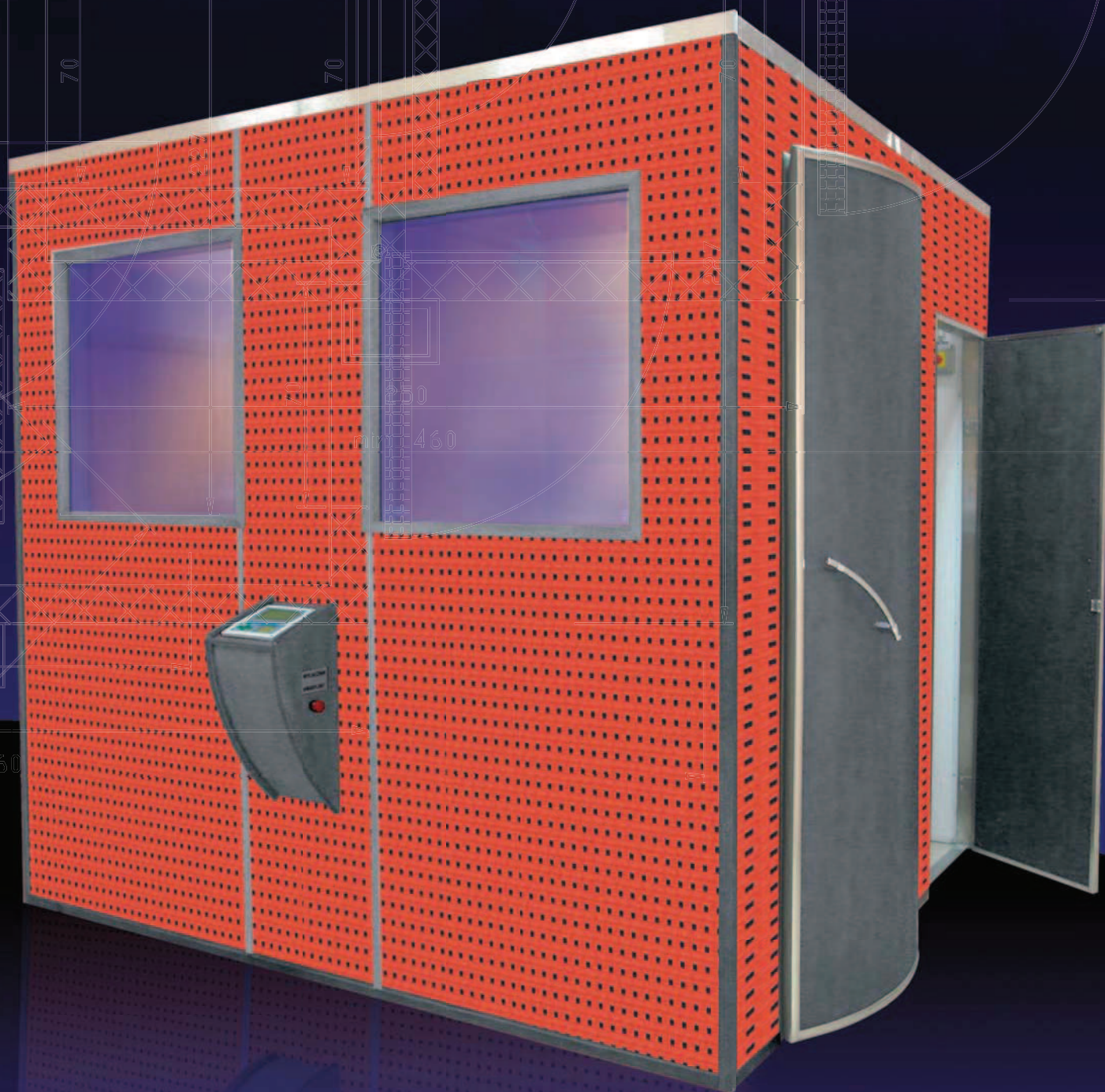


The cryochamber may have various finishing looks upon request

CRYOCHAMBER



P.P.H. JUKA produces cryochambers fuelled with liquid air – a mixture of liquid oxygen (21%) and liquid nitrogen (79%). Our company also produces cryochambers fuelled with liquid nitrogen.



P.P.H. JUKA reserves the right to introduce changes in construction solutions and technical parameters given in the brochure